



Dr. R. J. Barnabas
Principal

B. P. H. E. SOCIETY'S
AHMEDNAGAR COLLEGE, AHMEDNAGAR

A Christian Minority Institution

Affiliated to Savitribai Phule Pune University. Id No. PU/AN/ASC/01/1947


- 'B++' Grade Accreditation by NAAC, Bangalore
- 'College with Potential for Excellence' Award by the UGC, New Delhi
- 'Best College' Award by the Savitribai Phule Pune University
- 'Educational Excellence Award' by the Brands Academy, New Delhi
- 'Most Promising Educational Institute in Maharashtra' by Worldwide Achievers, New Delhi
- 'International Quality Award for Excellence in Higher Education' by Brands Impact
- 'Best College in Maharashtra for Innovative Educational Programs' by APS Research and Media
- 'The Most Promising Degree College in West India' by Prime Time Research Media Pvt. Ltd.
- A.I.S.H.E. Code : C-41242

ALTERNATE SOURCE OF ENERGY THROUGH SOLAR POWER



SOLAR POWER GRID CONVERTER

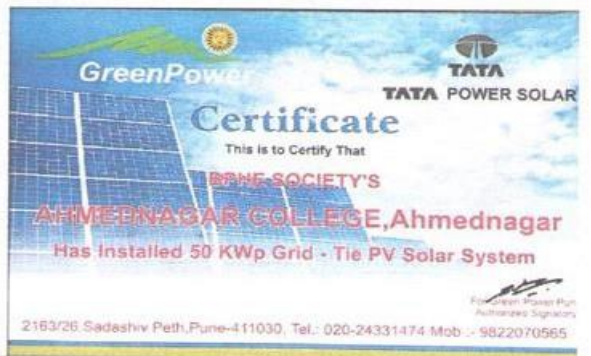
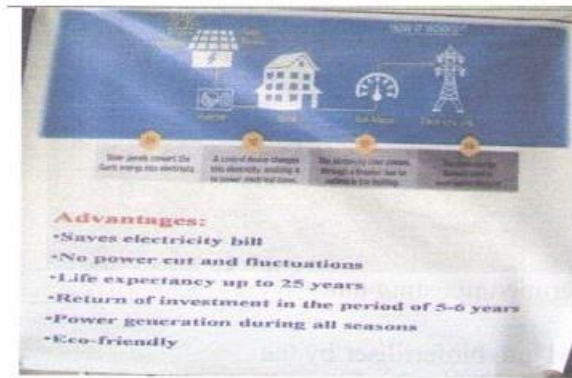
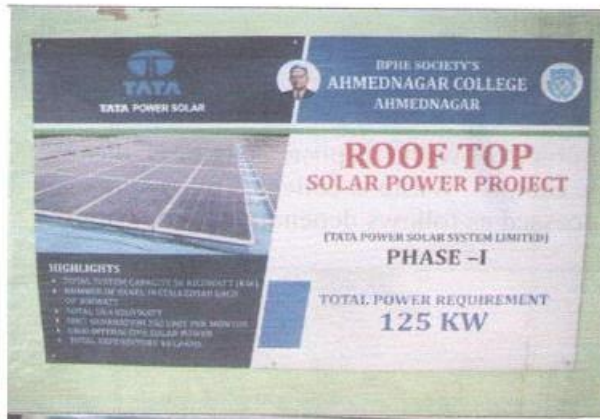


 GPS Map Camera



Ahmednagar, Maharashtra, India
Administrative Building, M.I.R.C Ahmednagar, Ahmednagar,
Maharashtra 414002, India
Lat 19.090238°
Long 74.746269°
22/08/22 03:25 PM

ROOF TOP SOLAR PANELS



Solar Power unit Installed

CERTIFICATION OF SOLAR POWER UNIT INSTALLATION

Sadashiv Peth, Shivalay Apts,
No. 6, Near Bharat Natya Mandir,
411030. Tel. : 020 - 24486229
greenpowerpune30@gmail.com



A. Technical Details:

Key Facts of the Power Plant

Design, supply, installation, and commissioning of a solar power plant

Location – Ahmednagar college
Ahmednagar

A) Plant capacity: 50kWp Grid Tie System.

Bill of Materials:

Project Size	50 Kwp Grid Tie System		
Sr. No	Description of Major Supply Items	Total Qty	UoM
1	Tata Power Solar Module – Multicrystalline 250 Wp x 4 nos (PerkWp)	200	sets
2	Module mounting structure	1	set
3	Grid Interactive Solar Inverter (1 x 50 kW Ph-3, 415 V AC, 50Hz, MPPT–) Transformer less or suitable as per the load/site	1	No
4	AC Distribution Board with Energy Meter	1	no
5	Installation kit	1	set

DETAILS OF SOLAR POWER SYSTEM INSTALLED

Adashiv Peth, Shivalay Apts,
No. 6, Near Bharat Natya Mandir,
411030 Tel. : 020 - 24480229
greenpowerpune30@gmail.com



GreenPower

Type of Business	: Solar Rooftop
Customer Name	: Ahmednagar college Ahmednagar
Proposed Capacity	: 50 Kwp.
Date of Offer	: 24 th Nov- 2016.
Period of Performance	: 05years warranty for system. 25 years performance warranty for modules
Business Point of Contact	: Mr. Deepak Choudhari Contact Number :+91 94050 00845

Solar Energy utilization (MSEB data)

2019-20

Sr. No.	BILL FOR THE MONTH OF	UNITS USED OF MSEB	UNITS GENERATED BY SOLAR	SOLAR UNITS SOLD TO MSEB
1	Jul-19	30945	4440	28
2	Aug-19	35953	4847	23
3	Sep-19	33344	3750	16
4	Oct-19	30468	4323	49
5	Nov-19	25762	5063	27
6	Dec-19	24089	3869	47
7	Jan-20	27369	4507	48
8	Feb-20	29191	4777	22
9	Mar-20	27361	6241	74
10	Apr-20	20021	6242	116
11	May-20	20460	5379	302
12	Jun-20	17800	5379	82
		<u>322763</u>	<u>58817</u>	<u>834</u>
	Monthly Total Power requirement			17931.27778
	UNITS GENERATED BY RENEWABLE ENERGY SOURCE			59651
	Monthly Units generated by Renewable Source			3313.944444
	% OF UNITS GENERATED BY RENEWABLE ENERGY TO TOTAL ENERGY CONSUMPTION			18.48136249

2020-21

Sr. No.	BILL FOR THE MONTH OF	UNITS USED OF MSEB	UNITS GENERATED BY SOLAR	SOLAR UNITS SOLD TO MSEB
1	Jul-20	17808	4514	117
2	Aug-20	17046	3838	116
3	Sep-20	16162	4000	105
4	Oct-20	14813	4478	63
5	Nov-20	14227	4699	87
6	Dec-20	15708	4368	5
7	Jan-21	16211	4359	12
8	Feb-21	15371	4370	15
9	Mar-21	22782	4600	5
10	Apr-21	17910	5009	110
11	May-21	19698	5210	350
12	Jun-21	17536	4428	25
Total		205272	53873	1010
Monthly Total Power requirement			17106	
UNITS GENERATED BY RENEWABLE ENERGY SOURCE			54883	
Monthly Units generated by Renewable Source			4573.583333	
% OF UNITS GENERATED BY RENEWABLE ENERGY TO TOTAL ENERGY CONSUMPTION			26.73672006	

2021-22

Sr. No.	BILL FOR THE MONTH OF	UNITS USED OF MSEB	UNITS GENERATED BY SOLAR	SOLAR UNITS SOLD TO MSEB
1	Jul-21	17738	4071	28
2	Aug-21	15785	3714	23
3	Sep-21	14962	3670	16
4	Oct-21	14636	4793	49
5	Nov-21	13956	3346	79
6	Dec-21	16722	3173	65
7	Jan-22	14569	3226	38
8	Feb-22	11270	4526	75
9	Mar-22	17822	4945	9
10	Apr-22	22056	4753	16
11	May-22	28286	5568	92
12	Jun-22	21252	3830	92
Total		209054	49615	582
Monthly Total Power requirement			17421.16667	
UNITS GENERATED BY RENEWABLE ENERGY SOURCE			50197	
Monthly Units generated by Renewable Source			4183.083333	
% OF UNITS GENERATED BY RENEWABLE ENERGY TO TOTAL ENERGY CONSUMPTION			24.01149942	

2022-23

Sr. No.	BILL FOR THE MONTH OF	UNITS USED OF MSEB	UNITS GENERATED BY SOLAR	SOLAR UNITS SOLD TO MSEB
1	Jul-22	23370	2676	9
2	Aug-22	20327	3966	22
3	Sep-22	25771	2634	4
4	Oct-22	20368	4068	279
5	Nov-22	20280	4742	23
6	Dec-22	16556	4648	38
7	Jan-23	17595	4745	87
8	Feb-23	16117	5111	57
9	Mar-23	21650	5372	30
10	Apr-23	23614	5747	94
11	May-23	23860	5558	30
12	Jun-23	22523	5036	11
Total		252031	54303	684
Monthly Total Power requirement			21002.58333	
UNITS GENERATED BY RENEWABLE ENERGY SOURCE			54987	
Monthly Units generated by Renewable Source			4582.25	
% OF UNITS GENERATED BY RENEWABLE ENERGY TO TOTAL ENERGY CONSUMPTION			21.81755419	